



MINISTÈRE DE LA DÉFENSE

Service hydrographique et océanographique de la marine

SHOM

General directorate

telephone (+33) 2 98 22 05 73
telecopie (+33) 2 98 22 05 91
email : shom-sec@shom.fr

Civilian postal address

13 rue du Chatellier
CS 92803
29228 Brest Cedex 2 - France

Military postal address

BP 8
29240 Brest Armées

Operations directorate

telephone (+33) 2 98 22 15 84
telecopie (+33) 2 98 22 05 91

NAVAREA II coordinator

telephone (+33) 2 98 22 16 67
telecopie (+33) 2 98 22 14 32
email : coord.navarea2@shom.fr

Commercial department

telephone (+33) 2 98 03 09 17
telecopie (+33) 2 98 47 11 42
email : distribution@shom.fr

Internet

www.shom.eu
www.shom.fr

SHOM hosts the International Hydrographic Organization (IHO) website
www.ohi.shom.fr

ISO 9001 2000 certified for all its activities



Service hydrographique et océanographique de la marine



English version

External Relations



SHOM is an active participant in French, European and Worldwide research networks by maintaining close relationships with numerous military and civilian bodies.

Amongst the SHOM's principal national partners are the ANEL, CNES, CNRS, the directorates of the Ministry of Transport, Ifremer, IGN, IRD, Météo-France and the maritime research cluster of Brittany and the Provence-Alpes-Cote d'Azur region.

Within the framework of the exchange of information and data useful to navigational safety and defence missions, SHOM maintains close relations with its foreign counterparts.

Representing France, it makes a major contribution to the work carried out under the auspices of the IHO, of which it was a founder member (1921).

SHOM represents France in the regional hydrographic commissions dealing with international hydrographic and cartographic responsibilities, and promoting technical cooperation in these fields between coastal states.



Acronyms

ANEL

National association of the littoral elected representatives

CNES

National centre for space studies

CNRS

French national scientific research centre

DGA

Délégation générale pour l'armement

EEZ

Exclusive Economic Zone

ENC

Electronic navigational chart

EPA

Public administrative establishment

GMES

Global monitoring for environment and security

HOM

Hydrography, Oceanography, Meteorology

ICA

International cartographic association

IFS

International Federation of Surveyors

IFREMER

French institute of marine research and exploration

IGN

French national geographic institute

IHO

International Hydrographic Organization

IMO

International Maritime Organization

IRD

French development research institute

NATO

North Atlantic Treaty Organization

POLMAR

MARPOL – Maritime pollution

SOLAS

Safety of life at sea

SSF

French Navy logistic support department

Le service hydrographique et océanographique de la marine (SHOM)

SHOM's vocation is to guarantee the quality and availability of information describing the physical maritime, coastal and ocean environment, by coordinating its collection, filing and dissemination in order to meet public, military and civilian requirements at the lowest cost.

3 major missions

- ↓ National hydrographic service
- ↓ Defence service
- ↓ Support to government maritime policies

SHOM is the heir to the world's first official hydrographic service

1693
Publication of the "Neptune français"

1720
Creation of the French Navy's chart and plan depot

1886
French Navy hydrographic service

1971
French Navy hydrographic and oceanographic service (SHOM)

2007
SHOM becomes an EPA (Public Administrative Establishment), placed under the control of the Ministry of Defence



The missions of SHOM

National hydrographic service

SHOM is the national service designated by the government to carry out general hydrography for the benefit of all seafarers.

Navigational safety, the priority field, is one of France's international obligations as a signatory of the United Nations convention on the law of the sea (UNCLOS) and of the international convention for the safety of life at sea (SOLAS).

Geographical coverage: the French maritime space (EEZ, 2nd in area in the world); areas placed under France's maritime charting responsibility within the IHO or in accordance with bilateral agreements with coastal states.

SHOM collects, records, processes and distributes urgent maritime safety information within NAVAREX II, which extends from the latitude of Ouessant to the river Congo.

SHOM is the government authorised service for the production of nautical charts and publications.

- French portfolio of 1100 charts (one third of the world's portfolio) issued in paper or electronic (ENC) format.

- Collection of 75 nautical publications (sailing directions, lists of lights, tide tables, navigators' guide books, etc.)

SHOM manages and improves the quality of the hydrographic data-bases in its areas of responsibility.

- Hydrographic surveys.

- Maintenance of related data bases (landmarks, bathymetry, sedimentology, wrecks, tidal and current measurements etc.)

Defence service

Within its areas of competence, SHOM supports the defence expertise and operational requirements in maritime environment.

- Collection, recording, processing and dissemination of the HOM (Hydrographic, Oceanographic and Meteorological) information relevant for naval operations.

- Production of environmental regional studies.

- Research and development.

- Ability to conduct a rapid environmental assessment operations.

- Involvement in interoperability and information management in liaison with its traditional information-producing partners: geographical data (IGN), oceanographic data (Mercator Ocean and NATO centres), meteorological data (Météo-France) and the system designers (DGA).

Support to government maritime policies

SHOM supports government maritime policies in a variety of fields.

- Government action at sea.

- Participation in the oil slick drift observation and forecasting analysis committee (MARPOL directive).

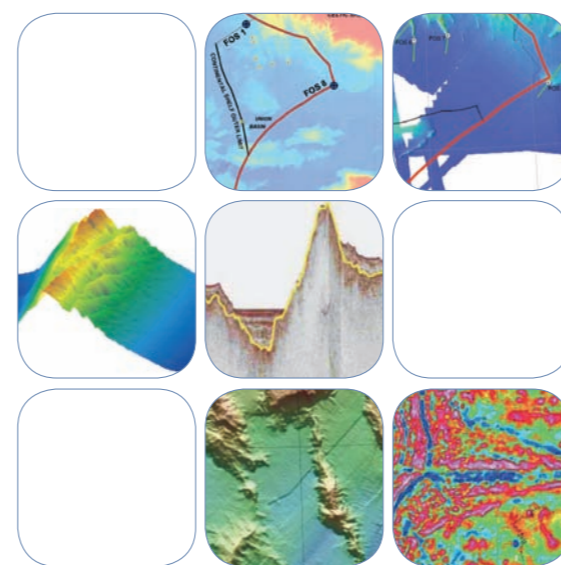
- Expert in delimitation and maritime boundaries.

- Management of tidal observatories and participation in alert networks for the prevention of risks and natural disasters.

- Contribution to digital modelling of the world's oceans and its extension into the coastal domain (maritime component of the European GMES project).

- Integrated management of coastal zones.

- In cooperation with IGN, establishment of the high resolution littoral geometric model (Litto3D®)

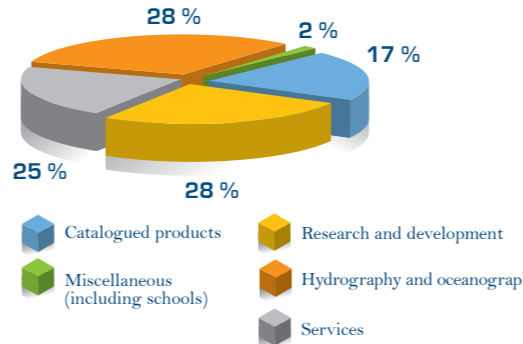


Organization of SHOM

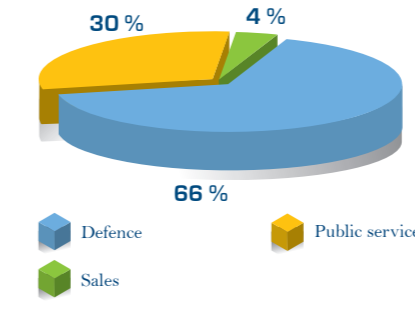
Resources (total : 68.3 M€)*



Activities*



Distribution by clients*

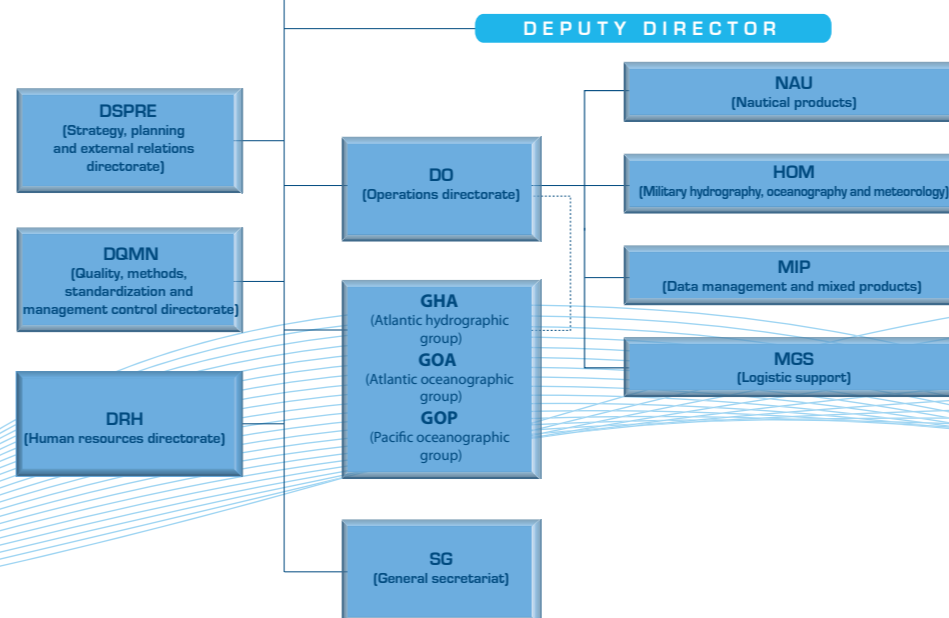


Workforce*



592 persons (744 including the crews of the hydrographic and oceanographic ships)
Establishments at Brest (502), Toulouse (59), St Mandé, Toulon, Nouméa, Papeete
*2006 figures

DIRECTOR GENERAL



SHOM management board

SHOM is administered by a management board and managed by a Chief Executive who has the IHO recognized qualifications.

Chief of Staff of the French Navy

5 members from the Ministry of defence

- The Chief of the Joint Staff
- The Director of the DGA
- The General Secretary for Administration
- The Flag Officer submarines and strategic submarine force
- The Deputy Chief of Staff for air/naval operations

5 representatives of the responsible ministries

- Finance
- Industry
- Transport
- Environment
- Overseas territories

The Secretary General for the Sea

4 persons chosen for their expertise

- The Deputy Chief Executive of the IGN
- The Chief Executive of Météo-France
- A representative of the national association of elected representatives of coastal towns
- A representative from the Brittany and Provence-Alpes-Côte d'Azur research clusters

4 members representing establishment personnel

- 3 elected representatives of the civilian staff
- 1 military representative appointed by the Chief Executive

Hydrographic and Oceanographic Ships

Five specialized ships are used by SHOM.

- The three 900-ton hydrographic ships, *Borda*, *Laplace* and *Laperouse* are mainly assigned to coastal hydrographic tasks and oceanography.

- The 3,300-ton hydrographic and oceanographic ship *Beautemps-Beaupre*, in service since 2003, is co-financed by the Ministry of Defence (95%) and the Research Ministry (5%).

- Since September 2005, SHOM can use the 6,600-ton oceanographic ship *Pourquoi pas ?* Co-financed by the Ministry of Defence (45%) and the Research Ministry (55%), it is civilian-manned and used by SHOM for 150 days per year.

